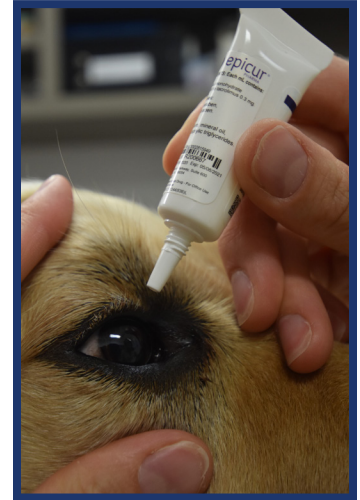


How to Apply Eye Ointment

1. Remove any discharge around the eye with a cotton ball moistened with saline solution.
2. Check the instructions on the tube for dosage. Most applications are 1/4" ribbon of drug. The following will apply to 1/4" dose. Please adapt these instructions if your dose is different.
3. Gently pull back upper and lower eyelids.
4. Holding the tube parallel to the lower eyelid, squeeze the ointment onto its edge, about the size of a grain of rice for 1/4" ribbon. DON'T let the tube touch the eye's surface.
5. Release the animal's head. Let your animal blink.
6. Lightly massage upper and lower eyelids together to spread the medication.



Watch a video! *Hover your phone's camera over the QR code*



800-754-5222